



SWINDON TOWN

football club



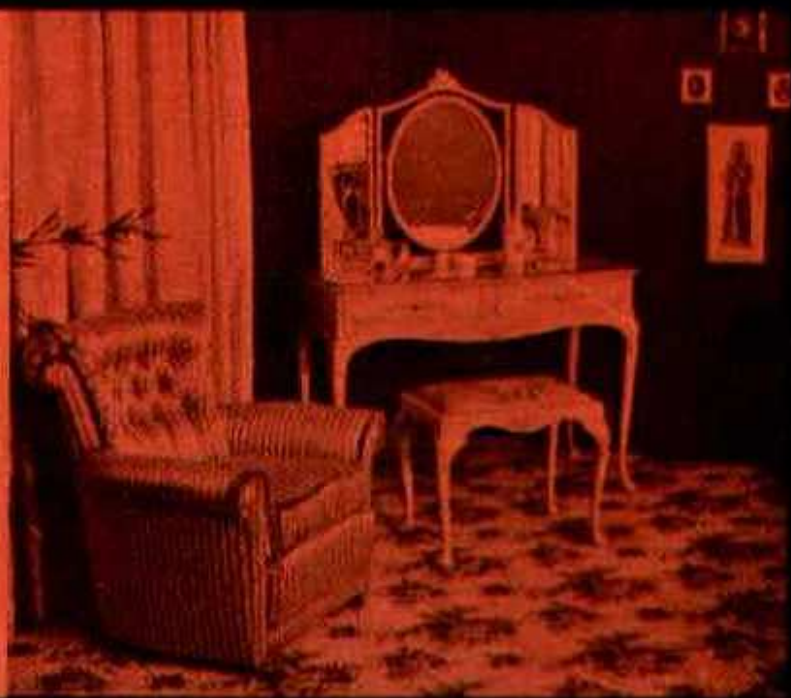
**official
programme 6d**

furniture & furnishings

of charm and distinction . . .
carpets floor coverings loose
covers curtains skilled workshop
repair service . . .

furnishing contractors
to:
government departments
hospitals hotels
schools factories
offices . . .

Our fully trained and
experienced staff
can deal promptly
and efficiently
with any furnishing
problem



mills+merricks

established over 65 years

ltd

16/17 Bridge Street Swindon phone 5365/6

SWINDON TOWN FOOTBALL COMPANY LIMITED

Registered Office: COUNTY GROUND, SWINDON

Directors:

Mr. W. J. CASTLE (Chairman) Mr. H. E. LANE (Vice-Chairman)
Messrs. F. L. COLLINGS, A. W. DONE, M. EARLE, R. FRICKER, C. J. GREEN,
F. PLYER, H. WILLIAMS and K. H. WILMER.

Manager: D. WILLIAMS.

Secretary: R. MORSE.

VOL. 18

SATURDAY, 25th NOVEMBER, 1967

No. 12

SATURDAY, 25th NOVEMBER, 1967

DIVISION III

SWINDON TOWN

V.

SCUNTHORPE UNITED

Kick-off 3 p.m.

REFEREE:

MR. A. W. S. JONES (Ormskirk)

LINESMEN:

Red Flag—MR. K. E. TEAVES (Oxford)

Yellow Flag—MR. B. K. ROBINSON (Shepperton)

The Borough Stationers

6 Commercial Road Swindon

For all office stationery

Backed by the resources of the
Borough Press

The most comprehensive stock in the District

Meet your friends for an enjoyable evening at

THE KINGSDOWN ARMS

(Host A. W. Vann)

FULLY LICENSED - ARKELL'S BEERS

SNACKS - Etc.

STRATTON ST. MARGARET

Tel. 3283

WILSONS (SWINDON) LTD.

**BUILDERS OF MODERN ATTRACTIVE
HOUSES AND BUNGALOWS**

Developments at:

Upper & Lower Stratton — Blunsdon & Highworth

HEAD OFFICE:

90/91 COMMERCIAL ROAD - SWINDON

Telephone Swindon 6361/3

NEWS and VIEWS

This afternoon we welcome Scunthorpe United, who gained election to Division III (North) in 1950. Eight years later, at the end of season 1957-58, they won promotion to Division II with a total of 66 points from 46 matches. They remained in this Division until 1964.

Managers have included Mr. L. Jones, ex-Arsenal and Wales, Mr. R. Stuart (now assistant-manager at Chelsea), Mr. T. McShane (ex-Plymouth Argyle and Swindon Town player), Dick Duckworth and Freddie Godwin who is now in America.

Scunthorpe United are now managed by Ron Ashman, who supporters will remember as a very fine player and sportsman with Norwich City. He has played on the County Ground on numerous occasions.

At the moment they occupy 25th position in the League with the following record: Played 19, Won 3, Drawn 5, Lost 11; Goals for 23, against 35; Points 13.

Against them in season 1966-67 we won 2—1 at the County Ground on 22nd April, 1967 with goals from Smart and Penman. The teams were: Swindon Town: Downsborough; Thomas, Trollope; Morgan, Nurse, Harland; Rogers, Penman, Terry, Smart, Walker. Scunthorpe United: Clemence; Hemstead, Barker; Webster, Burrows, Burkinshaw; Sloan, Barton, Rusling, Colquhoun, Coatsworth.

Many supporters will remember the game as Scunthorpe were a very young team who tired in the second half due to the pace, and were not quite hard enough in the tackle. On that day Scunthorpe United's goalkeeper was Ray Clemence, who was destined for bigger things, and has since joined Liverpool for a large fee.

Come Co-operative Shopping



FOR
THE BEST
IN
MEN'S
WEAR

**SWINDON AND DISTRICT CO-OPERATIVE SOCIETY
6 FLEET STREET, SWINDON**

NEWS AND VIEWS—continued

The return game at Scunthorpe was on 12th May, 1967, and resulted in a win for the Town by 2—1.

We hope for two points today after two away games at Tranmere and Southport have produced just one point. Reading between the lines it could easily have been **four**, which we needed as the League is very open at the moment.

Just **four** points and the Town could be second in the table.

Many criticisms have been made concerning our away record: Won 0, Drawn 5; Goals for 11, against 17.

Our good friend **Clive King** in the **Football Pink** gives two reasons:

- (a) The ball has not run at all kindly for them at crucial times.
- (b) There have been occasions when they lacked the necessary **urgency** to pull it off.

It seems that we lack the killer instinct and that pluck and determination are needed away from home.

Another problem facing the management is the Reserve team. Many people seem to think an old-head (experienced player) is needed, but surely a Reserve team is for bringing along young players.

At the moment they are rather young and inexperienced. It always used to be expressed by several local players that they never got a chance at the County Ground. Well today any useful young player has the opportunity now of playing on some of the top grounds in the country, i.e., Highbury, White Hart Lane, Stamford Bridge, Upton Park, Filbert Street and St. Andrew's.

The "A" team, who play in the Hellenic League, Premier Division, are in sixth position with the following record: Played 14, Won 8, Drawn 1, Lost 5; Goals for 34, against 21;

Tel: Swindon 5884

W. J. SELWOOD

Saddlery

General Leather Goods Manufactured
and Repaired to Your Individual
Requirements

148a MANCHESTER ROAD
SWINDON WILTS

Always at your service

L. BIBBY

For all Types—Rags, Iron and Metal,
etc. Spot Cash Paid. Please Tel. 2101
and our van will call.

THE PADDOCK, ERMIN STREET
STRATTON ST. MARGARET

★ **Cedarwood Sheds** ★

★ **Workshops and Greenhouses** ★

Made locally by

H. R. SPACKMAN

SHRIVENHAM ROAD - SWINDON - WILTS

Telephone Swindon 4458

**WISES CATERING
SERVICE**

(Reg. Wise)

Our Caterer for the past 19 seasons
Guarantees

A GOOD CUP OF TEA AT THE
COUNTY GROUND

A full range of Sweets & Cigarettes
at any of our five kiosks on your
way in. **ENJOY YOURSELF**

Warnes Rentals

To be sure!

51 Commercial Road,
SWINDON

Tel: 6486

NEWS AND VIEWS—continued

Points 17. Last week they played Didcot Town (the holders) in the Hellenic League Challenge Cup and won 3—2 at Didcot after twice being in arrears. Scorers were Desmeules (2) and Freeman. Well played lads!

The Junior team who play in the Borough League, Division 1, hold top position, but unfortunately were beaten last week by Westbourne Y.C. 3—1. Bad luck lads, it's tough at the top.

We notice the writer of one of the Sunday papers states: "MONEY IS NO PROBLEM" at Swindon. All sounds very assuring. We wish we could agree with him. He then seems to imply (as always) that players must be bought, because of our "away form".

We hear so much of that word. Let us make a clinical dissection of records. Our near neighbours Oxford United, at the moment occupy third position in the League table due to the following statistics:

Home						Away					
P	W	D	L	F	A	W	D	L	F	A	P
19	9	0	1	26	11	0	4	5	7	15	22

Compare that with our figures:

Home						Away					
P	W	D	L	F	A	W	D	L	F	A	P
19	6	2	1	22	6	0	5	5	11	17	19

Oxford has gained eighteen points at home to our fourteen, but they have played an extra game, and one fewer away.

Now let us compare the overall goal averages.

Oxford United: Goals for 33, against 26.

Swindon Town: Goals for 33, against 23.

Ours is much better than Oxford United's yet their position is third, and Swindon Town's is twelfth.

Work that out! Now you know why your pools do not come up.

Swindon Sports Centre

FOR ALL YOUR SPORTS EQUIPMENT & SPORTS CLOTHING

Largest range of Football Boots, Adidas, Mitre, Lawrence,
Winit, Pocock etc.

Supporters Club Scarves, Rattles etc. Send for Winter Catalogue.

23 COMMERCIAL ROAD, SWINDON

Telephone: 4270

Suppliers to Swindon Town A.F.C.

Maylott Studios

For GROUP & SPORT Photographs

Official Photographer to
Swindon Town Football Club

31 FARINGDON ROAD

TEL. 22792

Notton's Cafe

COUNTY ROAD

200 yards from Ground

PERFECT MEALS AT ALL TIMES

L. Wollen

OFF LICENCE

WINES and SPIRITS

Arkell's Ales and Stout

373 Cricklade Road, Swindon
Deliveries Daily Phone 3508

C. DUNN & SON

Builders & Decorators

Alterations, Renovations,
Conversions, Plumbers &
Sanitary Engineers

503 CRICKLADE RD. Tel. 22522

W. COLLINS (Swindon) LTD.

TURF ACCOUNTANTS

69 COMMERCIAL ROAD - SWINDON

TEL. 21371

AND AT THE GREEN, LYNEHAM

FORTHCOMING MATCHES

SATURDAY, 2nd DECEMBER, 1967

FOOTBALL COMBINATION CUP

ARSENAL

Kick-off 3 p.m.

SATURDAY, 9th DECEMBER, 1967

F.A. CUP 1st ROUND

SALISBURY

Kick-off 3 p.m.

SATURDAY, 16th DECEMBER, 1967

FOOTBALL COMBINATION

CHELSEA

Kick-off 3 p.m.



W. J. CASTLE

Office and Bakery:

4 and 5 MARKET STREET
SWINDON

Telephone 22017

Specialists

BIRTHDAY CAKES - WEDDING CAKES

DAIRY CREAM - PASTRIES

BUNS - ROLLS - SPONGES

Do not let **CHILBLAINS** spoil a good game



RELAPERNE

Price 2/6 from your CHEMIST

2/10 Post Paid from

BALLARD & CO. (CHEMISTS) LTD.

FARINGDON - BERKS

OUR VISITORS



SCUNTHORPE UNITED

BRIAN ARBLASTER (Goalkeeper)

Signed on free transfer from Chesterfield in close season. Was previously with Sheffield United. A part time professional, who takes over from Ray Clemence, transferred to Liverpool.

JIM LAVERY (Goalkeeper)

Young Scottish part-time professional, who was regular goalkeeper for last season's successful youth team, and played many games for the reserves.

STEPHEN DRAKE (Goalkeeper)

Born at Goole, Stephen Drake joined Scunthorpe United after service with Huddersfield Town.

DEREK HEMSTEAD (Right back)

Local born, Hemstead joined Scunthorpe United straight from a local school. A tall and well built defender, who last season attracted a lot of attention from other clubs.

JOHN BARKER (Left back)

Son of the Club's chief scout and former full back Jeff Barker. Joined the Club on leaving school, and after experimenting in various positions established a first team place at left back last season. Born Huddersfield.

STUART TAYLOR (Full back)

Came up through the junior and reserve teams, and has played some sound games in Third Division football. Born at Owston Ferry.

GRAHAM FOXTON (Full back)

Born at Harrogate, and another member of last season's youth team. Has been chosen for special coaching by the F.A. at Lilleshall this season.

NIGEL JACKSON (Full back)

Another young defender of considerable promise. Apprentice professional, born at Pudsey.

KEITH BURKINSHAW (Wing half)

Club captain and coach, who is in charge of playing affairs. Experienced Yorkshireman from Higham, Yorks, he first played with Liverpool, and then moved to Workington, where he was for some time player-manager. Joined Scunthorpe United from Workington.

"A FAMOUS NAME IN ROSES"

GREGORY'S ROSES

STAPLEFORD NOTTINGHAM

An agent for Rose Trees grown by Gregory's of Nottingham.

All bushes are guaranteed and will be replaced if fail to bloom.

Discount on quantities over £2.

For catalogues and details apply:-

**K. M. CLARKE, THE WHITE HOUSE, EASTROP,
HIGHWORTH, WILTS.**

Telephone: Highworth 322

**G. H. FLOWER & SON LIMITED
WOOD LANE, CHIPPENHAM**

LICENCE No. S.2802

PHONE 2017

SCRAP METAL

and

GENERAL WASTE SALVAGE DEALERS

Plant dismantling carried out

Members of

National Association of Non-Ferrous Metal Merchants

THE PORK SHOP

(Swindon Bacon Curing Co. Ltd.)

Specialists in

BACON - PORK - COOKED HAM

50 FLEET STREET - SWINDON

TEL: 22122

OUR VISITORS—continued

BARRY HORSTEAD (Centre half)

Scunthorpe United's longest serving professional, and a fine utility man. Can play any defensive position, and has even turned out in goal during emergencies. Joined Scunthorpe United from his native Brigg.

BARRY LINDSEY (Wing half)

Joined Scunthorpe United from the same local school as Derek Hemstead. Was originally an inside forward, but has been successfully converted to wing half. Excellent ball player. Born Scunthorpe.

FRANK BURROWS (Centre half)

Now in his third season with Scunthorpe United, having been signed from Raith Rovers. Strong defender, who has quickly made his mark in Third Division football. Born Larkhill, Scotland.

BARRY MARTIN (Centre half)

Signed as a part-time professional last season. Born Doncaster, but went through Scunthorpe schools football.

LEN SHARPE (Wing half)

A most experienced utility defender. He joined Scunthorpe United from local schools football, and then went to Hull City. Rejoined Scunthorpe United last season after a short spell with Goole Town.

ALAN WEBSTER (Wing half)

A young player in his second season with the Club. Signed after some bright displays as an amateur. Born Melton Mowbray.

GEOFF NAYLOR (Wing half)

Another promising young apprentice professional. Joined from his native Goole.

DON WELBOURNE (Wing half)

Signed as a full-time player last season after completing apprentice terms. Joined from a Scunthorpe school. Is the younger brother of Watford player Duncan Welbourne.

FRANK BARTON (Inside forward)

Born Barton Humber, and came through the Club's apprentice scheme. Gained international youth honours, and has quickly made first team standard.

JOHN COLQUHOUN (Inside forward)

Joined Scunthorpe United from Oldham Athletic as a wing forward, but has settled down well inside. Clever ball player, with a strong shot. Born Stirling.

BRETTS

PET AND GARDEN SUPPLIES

**32-33 Commercial Rd.
Swindon**

**6 Cromwell St.
Swindon**

Electric Shaver Specialists

Repairs, spares, 8 hour servicing for all makes.
Full range of new shavers. Reconditioned shavers.
Part exchanges. Agents for "Executive" shavers.

BARBER SHOP

117 MANCHESTER ROAD, SWINDON

Telephone: 3131

**FOR ALL YOUR ANGLING NEEDS
CONSULT**

FRANK WOODWARD

Swindon's Fishing Tackle Specialist

**25 HAVELOCK ST., SWINDON
PHONE 3879**

For Paints of Good Quality

**H. S. HODGES & SONS
(SWINDON) LTD.**

**CRICKLADE RD., SWINDON
PHONE 22422**

**Dulux, Brolac, Valspar, Wallcharm,
etc.**

SOUTHERN LAUNDRY CO. LTD.

Launderers and Dry Cleaners

**HAYDON ST. - SWINDON
TELEPHONE 4161**

**The Advertisers in this
programme have supported
the Club. Will you help us
reciprocate by supporting
them whenever possible?**

OUR VISITORS—continued

DAVID SLOAN (Wing forward)

Had the distinction of getting a Northern Ireland under 23 cap after only six Football League games. Signed from Bangor City, Northern Ireland. Born Belfast.

GRAHAM RUSLING (Centre forward)

Part-time professional, who signed from a local club last season. Given an early chance in the senior team. Born Keadby, near Scunthorpe.

DAVID GARLAND (Centre forward)

In his first season at Scunthorpe, having signed from Grimsby Town. Native of Grimsby, and part-time professional.

DAVID HARNEY (Forward)

Another part-time professional, signed from Grimsby Town during the close season. A lively player, who can also turn out at wing half.

DAVID VERITY (Inside forward)

Another of Scunthorpe United's promising youth players, who has made great progress since moving from his native Halifax. Had his first team debut towards end of last season.

MIKE OATES (Wing forward)

Born at Haxey, he joined Scunthorpe United this season from Grimsby Town.

ALAN OLBISON (Wing forward)

Yet another member of the Club's promising youth group. Born Leeds.

PETER COWLING (Inside forward)

Signed as part-time professional last season, and another youngster of promise. Born Flixborough, near Scunthorpe.

PETER FOLEY (Wing forward)

Signed in close season from Workington. A clever two footed player from whom much is expected. Born Edinburgh.

NEIL FOXON (Wing forward)

Born Nottingham. Signed 1965. Very fast, made his first team debut last season.

STEPHEN IBBITSON

Signed this year on the ground staff on leaving school last July. Product of Pudsey Juniors. Full of potential.

Hatton's Newsagency

A. J. D. & N. J. Woodhouse

**Newsagents :: Tobacconists
Confectioners**

Agents for Wessex School of
Motoring

Booking Agents for Rimes Coaches

6 Regent Circus (near G.P.O.)

Telephone Swindon 22731

HULFORD MOTORS Ltd.

SELF DRIVE HIRE

Fleet of 1967 Fords
Anglias De-Luxe - Cortinas
De-Luxe - Zephyr V4

SHRIVENHAM ROAD

(200 yards from Football Ground)

Phone 4934

Large Car Park available

For High Class
Central Heating, Plumbing
Painting and Decorating
Electrical Installations
and Repairs

**NORTH WILTS
Sanitary & Heating
Co. Ltd.**

NEWPORT ST., SWINDON

Phone 5373/4

**your savings
are safe and
sound in ...**

MEMBER OF THE BUILDING
SOCIETIES ASSOCIATION

**BRISTOL
BUILDING**

Swindon
BRISTOL & WEST HOUSE

SWINDON TOWN

Downsborough

Dawson (2)

Trollope

Butler (4)

Nurse (5)

Heath (7)

Penman (8)

Terry (9)

**KEEP IN TOUCH
EVENING
ADVERTISER
WITH THE NEWS**

**Swindon's 12th Man
Walker**

Foxham (11)

Deere (10)

Colquhoun (9)

Blyth (6)

Burrows (5)

Taylor (3)

Hemstead

Drake

SCUNTHORPE UNITED

Mills & Merrick

Complete House Furnishing

Furnishing Contractors

16-17 BRIDGE STREET, SWINDON.

BRISTOL & WEST BUILDING SOCIETY

Swindon Office:

BRISTOL & WEST HOUSE, REGENT CIRCUS, SWINDON

SWINDON TOWN

Downsborough

son (2) Trollope (3)

Nurse (5) Harland (6)

Terry (9) Smart (10) Rogers (11)

**KEEP IN TOUCH
EVENING
ADVERTISER
WITH THE NEWS**

These teams are subject
to alteration

Scunthorpe's 12th Man

Colquhoun (9) Barton (8) Sloan (7)

Burrows (5) Naylor (4)

or (3) Hemstead (2)

Drake

SCUNTHORPE UNITED

c Merricks Ltd.

House Furnishers and

ishing Contractors

, SWINDON.

Tel: 5365/6

McILROYS RESTAURANT

Banqueting & Ballroom

for morning coffee,
luncheon and
afternoon tea - in
pleasant surroundings -
you will find McIlroys
are top of the
'league'. For all
occasions.

Fully Licenced. Parties and
Functions catered for.

McIlroys Restaurant
64-72 Regent Street
Tel. 5294



COATE GARAGE

REPAIRS - OVERHAULS - WELDING
SERVICING - REBORING - TYRES

Props. E. V. & W. H. Mattick
Marlborough Rd., Swindon

DIVISION III

(up to and including Thursday, 23rd November, 1967)

	P	W	D	L	F	A	Pts
Walsall	19	12	3	4	42	25	27
Torquay United	19	9	5	5	26	27	23
Oxford United	19	9	4	6	33	26	22
Peterborough United	19	9	4	6	33	27	22
Bury	18	9	3	6	42	30	21
Barrow	19	9	3	7	28	21	21
Stockport County	19	9	3	7	27	28	21
Watford	19	8	4	7	32	21	20
Shrewsbury Town	19	7	6	6	27	26	20
Gillingham	19	7	6	6	25	26	20
Reading	19	9	2	8	29	32	20
Swindon Town	19	6	7	6	33	23	19
Brighton & H.A.	18	8	3	7	23	21	19
Southport	19	8	3	8	32	31	19
Colchester United	19	6	7	6	25	35	19
Oldham Athletic	19	8	2	9	26	24	18
Tranmere Rovers	19	8	2	9	32	32	18
Northampton Town	19	7	4	8	27	32	18
Bournemouth & B.A.	19	6	6	7	23	28	18
Bristol Rovers	18	6	5	7	26	31	17
Grimsby Town	19	5	3	11	22	31	13
The Orient	18	4	5	9	19	30	13
Scunthorpe United	19	3	7	9	23	36	13
Mansfield Town	19	3	5	11	23	35	11



throughout the West

you will find Bradley Estates beautifully situated to meet the requirements of modern living. If you are thinking about a new home and would like to receive full details of our current and planned estates write now to 74 Victoria Road Swindon Wiltshire. Please send me details of

- ☐ Green Meadow Estate, Swindon, Wiltshire
- ☐ Nythe Estate, Swindon, Wiltshire
- ☐ Monkton Park Estate, Chippenham, Wiltshire
- ☐ Park Hill Estate, Frome, Somerset
- ☐ Milldown Estate, Blandford Forum, Dorset
- ☐ Southwick Estate, Trowbridge, Wiltshire
- ☐ Estates planned for Poole, Dorset

Name

Address



BRADLEYESTATES

SUPPORTERS *CLUB NOTES*

At the Social Club tonight music is provided by THE SUNSETS and tomorrow (Sunday 26th) by the JOHNNY McCARTHEY TRIO.

Members of the Social Club might note 2nd DECEMBER as an addition to our usual Party Night entertainment a local illusionist of repute, one SAN YEN by name, has been engaged to give an half-hour show. There is no truth in the rumour that he is going to cause the Management Committee to disappear during his performance!!!

On Wednesday, 22nd last, over 300 visitors, guest of our Brewers, Messrs. Gibbs Mew, were entertained at a beer tasting function. Needless to say the function was a great success.



Check YOUR driving and YOUR car

Make both as safe as you can for
NIGHT DRIVING

Accidents at night are twice as likely
to have serious or fatal results

Suppliers to the Swindon Team

MAY WE SUPPLY YOU?



EARLE

of Chippenham Limited

MAIN

FORD

DEALERS

COCKLEBURY ROAD - CHIPPENHAM

Telephone 3255

THE FOOTBALL COMBINATION

1967

Date	Opponents	Ground	Result
August 19	CHELSEA..... (A)	0—1
26	SOUTHAMPTON.....	1,625 (H)	0—3
29	BIRMINGHAM CITY..... (A)	0—4
September 2	IPSWICH TOWN..... (A)	1—6
9	WALSALL.....	1,278 (H)	0—2
16	GILLINGHAM..... (A)	0—1
23	ARSENAL..... (H)	0—1
October 7	SOUTHAMPTON (C)..... (A)	0—5
14	WEST HAM UNITED (C)..... (A)	2—5
November 4	WEST HAM UNITED (C)..... (H)	0—2
18	SOUTHAMPTON (C)..... (H)	1—3
21	PLYMOUTH ARGYLE (C)..... (H)	0—0
29	PLYMOUTH ARGYLE (C)..... (A)
December 2	ARSENAL (C)..... (H)
12	ARSENAL (C)..... (A)
16	CHELSEA..... (H)
23	SOUTHAMPTON..... (A)
26	COVENTRY CITY..... (H)
1968			
January 2	COVENTRY CITY..... (A)
6	IPSWICH TOWN..... (H)
16	WALSALL..... (A)
20	GILLINGHAM..... (H)
27	PETERBOROUGH UNITED..... (A)
February 3	ARSENAL..... (A)
10	BIRMINGHAM CITY..... (H)
17	LEICESTER CITY..... (A)
24	TOTTENHAM HOTSPUR..... (A)
March 2	NORTHAMPTON TOWN..... (H)
9	WEST HAM UNITED..... (H)
20	PLYMOUTH ARGYLE..... (A)
23	PETERBOROUGH UNITED..... (H)
30	WEST HAM UNITED..... (A)
April 6	LEICESTER CITY..... (H)
20	TOTTENHAM HOTSPUR..... (H)
30	NORTHAMPTON TOWN..... (A)
May 4	PLYMOUTH ARGYLE..... (H)

... not just concrete, but

Premix

SWINDON AREA OFFICE c/o COLN GRAVEL CO. LTD.
CLAYDON PIKE LECHLADE GLOS.

PHONE LECHLADE 461/2

Premix—an Amey company—serves 21 counties



CLARK BROS. (Swindon) Ltd.

Building and Civil Engineering Contractors

CONSULT US FOR
BUILDING AND CIVIL ENGINEERING
CONSTRUCTION IN ALL ITS PHASES

**STRATTON ROAD
SWINDON**

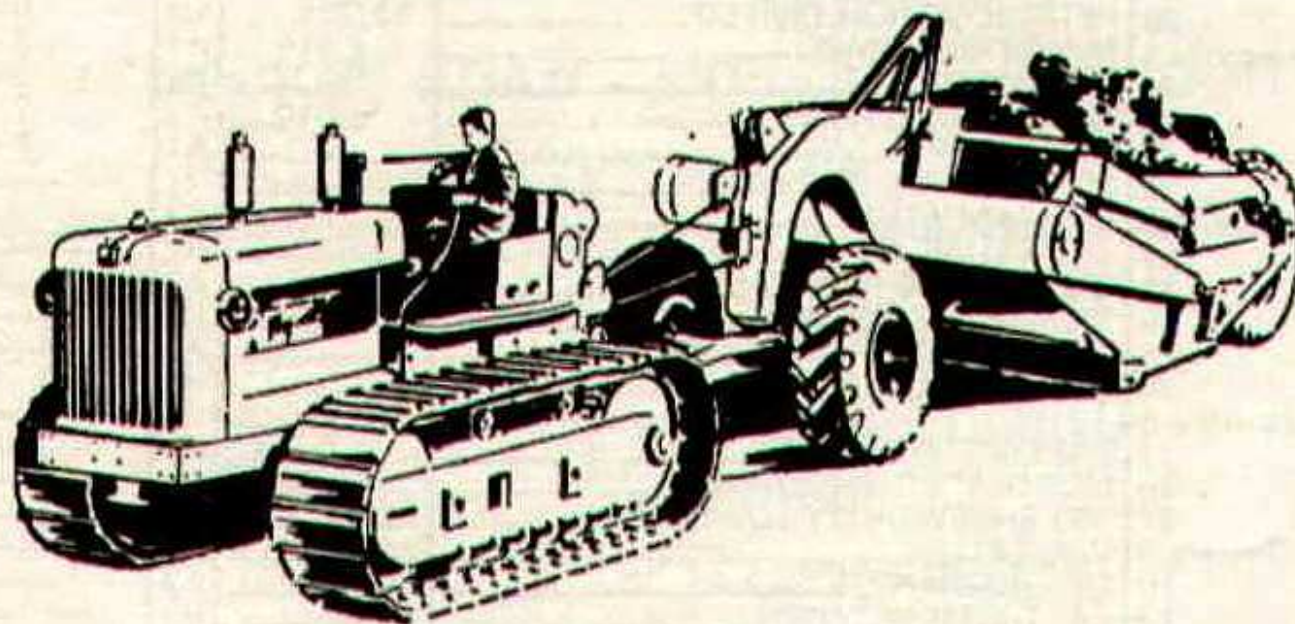
Telephone
Swindon 27261

Season ticket holders are reminded that their tickets for the First Round F.A. Cup Tie v. Salisbury on Saturday, 9th December, must be claimed by Saturday, 2nd December, 1967

H. HIBBERD LTD.

40 NEWPORT STREET, SWINDON

Plant Hire Contractors



FOR YOUR EARTH-MOVING EQUIPMENT

TELEPHONE SWINDON 6125

DIVISION III

Date	Opponents	Ground	Result
August 19	BRIGHTON & HOVE ALBION.....	15,790 (H)	2—1
22	NEWPORT COUNTY (League Cup).....	10,870 (H)	1—1
25	STOCKPORT COUNTY.....	9,103 (A)	0—2
29	NEWPORT Co. (League Cup Replay).....	6,537 (A)	0—2
September 2	TRANMERE ROVERS.....	12,152 (H)	3—1
4	BARROW.....	7,352 (A)	1—1
9	THE ORIENT.....	4,722 (A)	0—0
16	NORTHAMPTON TOWN.....	13,280 (H)	4—0
23	WALSALL.....	9,132 (A)	2—3
26	BARROW.....	13,567 (H)	0—1
30	GILLINGHAM.....	12,983 (H)	2—2
October 4	READING.....	17,867 (A)	1—2
7	BURY.....	8,222 (A)	1—1
14	BOURNEMOUTH & B.A.....	11,135 (H)	4—0
21	COLCHESTER UNITED.....	4,907 (A)	1—2
24	READING.....	17,229 (H)	5—1
28	PETERBOROUGH UNITED.....	12,215 (H)	0—0
November 4	MANSFIELD TOWN.....	4,619 (A)	2—2
11	WATFORD.....	13,327 (H)	2—0
13	TRANMERE ROVERS.....	6,519 (A)	2—3
18	SOUTHPORT.....	(A)	1—1
25	SCUNTHORPE UNITED.....	(H)	
December 2	OLDHAM ATHLETIC.....	(A)	
9	(1) SALISBURY.....	(H)	
16	BRIGHTON & HOVE ALBION.....	(A)	
19	STOCKPORT COUNTY.....	(H)	
26	TORQUAY UNITED.....	(A)	
30	TORQUAY UNITED.....	(H)	
January 6	(2).....	()	
13	THE ORIENT.....	(H)	
20	NORTHAMPTON TOWN.....	(A)	
27	(3) SHREWSBURY TOWN.....	(H)	
February 3	WALSALL.....	(H)	
10	GILLINGHAM.....	(A)	
17	(4) GRIMSBY TOWN.....	(H)	
24	BURY.....	(H)	
March 2	BOURNEMOUTH & B.A.....	(A)	
9	(5) SHREWSBURY TOWN.....	(A)	
16	COLCHESTER UNITED.....	(H)	
23	PETERBOROUGH UNITED.....	(A)	
30	(6) MANSFIELD TOWN.....	(H)	
April 6	WATFORD.....	(A)	
12	OXFORD UNITED.....	(A)	
13	SOUTHPORT.....	(H)	
16	OXFORD UNITED.....	(H)	
19	SCUNTHORPE UNITED.....	(A)	
23	BRISTOL ROVERS.....	(H)	
27	(S.F.) OLDHAM ATHLETIC.....	(H)	
May 4	BRISTOL ROVERS.....	(A)	
11	GRIMSBY TOWN.....	(A)	
18	(Final)		

Cecil Green

Artistic Decorations in all its branches

12 Armstrong Street, Swindon, Wilts.

Tel. 4593

G. A. STREETLY

Tobacconist and Confectioner

10 BOURNE ROAD - MOREDON - SWINDON

Telephone: 4956

**"COAL!"
"COAL!"
"COAL!"**

J. WILMER

**St. Margaret's Road
Swindon**

TELEPHONE 22535

LEESE, ING & CO. LTD.

Mineral Water and Squash Manufacturers

LANSDOWN ROAD - SWINDON

TELEPHONE 22744

KEY OF THE BOARD

First Section

- A—Arsenal v. West Ham United
- B—Chelsea v. Manchester United
- C—Liverpool v. Wolverhampton Wanderers
- D—Manchester City v. Burnley
- E—Newcastle United v. Sheffield Wednesday
- F—Nottingham Forest v. Leeds United
- G—Sheffield United v. Leicester City
- H—Southampton v. Sunderland
- I—West Bromwich Albion v. Tottenham Hotspur
- J—Birmingham City v. Crystal Palace
- K—Blackburn Rovers v. Portsmouth
- L—Blackpool v. Norwich City
- M—Bolton Wanderers v. Aston Villa
- N—Bristol City v. Charlton Athletic
- O—Carlisle United v. Cardiff City
- P—Huddersfield Town v. Queen's Park Rangers
- Q—Hull City v. Derby County
- R—Ipswich Town v. Plymouth Argyle
- S—Middlesbrough v. Preston North End
- T—Brighton & Hove Albion v. Bristol Rovers

Second Section

- A—Gillingham v. Peterborough United
- B—Grimsby Town v. Mansfield Town
- C—Northampton Town v. Bournemouth & Boscombe A.
- D—The Orient v. Bury
- E—Reading v. Southport
- F—Torquay United v. Watford
- G—Walsall v. Colchester United
- H—Bradford v. Workington
- I—Doncaster Rovers v. Lincoln City
- J—Luton Town v. Halifax Town
- K—Newport County v. Chesterfield
- L—Rochdale v. Darlington
- M—Southend United v. Bradford City
- N—York City v. Exeter City



British Rail

We can organise your Group Travel—very well too!

As a start . . . you need only ten people to qualify for the Special Group Travel discount (two children count as one adult).

And to go on with . . . there are reduced fares for day outings, single and return; for parties making journeys over a period; and for individuals (minimum) travelling to one particular point for a business meeting or conference.

Ask at your local station or travel agent for full details.

ESTABLISHED 1923

DOBELL SHEARMAN & CO. LTD.

£10 TYPEWRITERS from £10

Also full selection new standard and portable typewriters
OFFICE EQUIPMENT

29 High Street & 33 Faringdon Road, Swindon.

Tel. 4961/2

Heating Services (C.G.H.) Ltd.

HEATING, PLUMBING & VENTILATING
ENGINEERS

INSTALLATION & REPAIRS

24 HOUR MAINTENANCE SERVICE

28 BUCKINGHAM RD.

Tel. SWINDON 27630

LAST WEEKS MATCHES

FOOTBALL LEAGUE (DIVISION III)

Saturday, 11th November, 1967.

Beat WATFORD (Home) 2—0.

Team: Downsborough; Dawson, Trollope; Butler, Nurse, Harland; Heath, Penman, Terry, Smart, Rogers.

Scorers: Terry and Rogers.

Referee: Mr. R. B. Kirkpatrick (Leicester).

Attendance: 13,327.

Monday, 13th November, 1967.

Lost to TRANMERE ROVERS (Away) 3—2.

Team: Downsborough; Dawson, Trollope; Butler, Nurse, Harland; Heath, Penman, Terry, Smart, Rogers.

Scorers: Smart and Rogers.

Referee: Mr. T. E. Lockett (Worcester).

Attendance: 6,519.

Saturday, 18th November, 1967.

Drew with SOUTHPORT (Away) 1—1.

Team: Downsborough; Dawson, Trollope; Butler, Nurse, Harland; Heath, Penman, Terry, Smart, Rogers. (Sub.: Walker.)

Scorer: Walker.

Referee: Mr. K. Styles (Barnsley).

Attendance:

FOOTBALL COMBINATION CUP

Saturday, 18th November, 1967.

Lost to SOUTHAMPTON (Home) 3—1.

Team: Jones; Jeffrey, Fry; Desmeules, Blick, Clark; Mascia, Hubbard, Giles, Bailey, Dangerfield.

Scorer: Giles.

Tuesday, 21st November, 1967.

Drew with PLYMOUTH ARGYLE (Home) 0—0.

Team: Jones; Jeffrey, Trollope; Desmeules, Blick, Clark; Mascia, Heath, Giles, Thomas, Walker.

HELLENIC LEAGUE CHALLENGE CUP — 1st ROUND

Saturday, 11th November, 1967.

Beat DIDCOT (Away) 3—2.

Team: Smith; Allen, King; Wall, Gubbins, Tyler; Boorman, Mascia, Smith J., Desmeules, Freeman.

Scorers: Desmeules (2) and Freeman.

F. J. ROPER

Devizes Rd.

Swindon

Phone 22341

F. J. ROPER

Cliftonian

38 William St.

Swindon

Phone 3785

Swindon's
Finest
FISH and CHIPS

**CALL ON
YOUR
WAY
HOME**

M e n u

**PLAICE
HAKE
COD
SKATE**

**WE SHALL BE
WAITING
TO
SERVE YOU**

F. J. ROPER

High St.

Wootton Bassett

F. J. ROPER

Cross Hayes

Malmesbury

COUNTY GROUND REGULATIONS

1. All matches are played in accordance with the Rules and Regulations of the Football Association and the Football League.
2. Play cannot be guaranteed on any day and accordingly no refund of cash admission charges paid at the turnstile can be made.
3. Refunds will be made in respect of seats booked in advance where a match is postponed, subject to a time limitation, details of which can be obtained from the Box Office. No such refunds will be entertained in respect of abandoned matches.
4. No unauthorised person is permitted to enter upon the field of play. Persons carrying flags, banners, sticks, or any objects likely to cause obstruction or lead to a breach of the peace will not be admitted.
5. With the exception of authorised Press representatives holding official passes, the taking of photographs or ciné-photographs inside the ground is prohibited.
6. Only persons specially authorised are permitted to offer newspapers, periodicals or any other goods for sale on the property of the Swindon Town Football Club Ltd.
7. Betting and the use of radio sets is not permitted in any part of the ground.
8. All persons visiting the County Ground are admitted subject to the above Ground Regulations, the Rules and Regulations of the Football League and of the Football Association. Swindon Town Football Club Ltd. reserve the right to refuse admittance or to remove from the ground any person who shall refuse to comply with them, or whose presence is a source of danger or annoyance to others.

I say!

Do you know?



1817

1967

**It's our 150th ANNIVERSARY this year
WE HAVE BEEN PROVIDING
MAXIMUM SECURITY FOR SAVINGS
FOR 150 YEARS**

**INTEREST 5½% IN THE
SPECIAL INVESTMENT DEPT.**

Local Offices
17 Commercial Road, Swindon.
6 Maryport Street, Devizes.

**T RUSTEE
S AVINGS
B ANK**

8,000 SEATS FOR SHEFFIELD WEDNESDAY F.C.

7,000 SEATS FOR ASTON VILLA F.C.

6,000 SEATS FOR SHEFFIELD UNITED F.C.

3,500 SEATS FOR LEEDS UNITED F.C.

3,000 SEATS FOR OLDHAM F.C.

4,000 SEATS FOR PETERBOROUGH AGRICULTURAL SOCIETY

13,500 SEATS FOR HULL CITY F.C.

3,200 SEATS FOR COVENTRY CITY F.C.

FAST, EFFICIENT SERVICE FROM MARTYN LYNSHAW LTD.

THE LATEST THING IN STADIUM SEATING

- MANUFACTURED IN HIGH-DENSITY POLYTHENE
- NO MAINTENANCE
- ANY COLOUR
- SEND FOR DETAILS
- LIGHT CONSTRUCTIONAL STEELWORK
- ANCILLARY WORK FOR THE BUILDING TRADE



Telephone
21844

FAST EFFICIENT SERVICE BY
MARTYN LYNSHAW LIMITED

BOUNDARY WORKS - STRATTON ROAD - SWINDON